



Cholmondeley
CHILDREN'S FOUNDATION

whakanuia a tatou tamariki | value our children



Ensuring our Children's Future Forever

Cholmondeley Children's Foundation



Contents

- 01 An introduction to Cholmondeley
- 03 About the Centre
- 05 Meet Toni Tinaru
- 07 Hugh Heber and the History of Cholmondeley
- 09 A story of hope
- 11 The Ballantyne Family
- 12 Our Chairman's Challenge
- 13 Ryan's story
- 14 Our Priority Areas
- 15 Secret Squirrel's Space
- 16 Giving for positive change
- 17 Our \$10 million goal



An introduction to Cholmondeley

Cholmondeley Children's Centre

The Centre is the only provider of free, short-term, planned or emergency respite care and education services for children in need in New Zealand. Available to children aged 5-13 from all walks of life across Canterbury, its model is also believed to be one of the only facilities of its kind worldwide.

The Centre can be accessed in times of family stress, crisis, or as a planned stay to focus on family wellbeing. It also provides support to families in the community through its outreach programme, delivered by the Awhi/care team to enhance resilience in families in challenging and ever-changing situations.



The Centre offers an essential service, the benefits of which have been proven over time – to learn more, visit our website by scanning this QR code



Cholmondeley Children's Foundation

The Foundation exists to support the vital work that the Centre delivers, by establishing a fund to ensure the Centre can be supported in perpetuity. Established in 2005, the Foundation safeguards the essential services that the Centre provides, and the resulting maintenance those services require, with the aim to decrease the Centre's reliance on annual fundraising to cover their operational costs.

Since its inception, the Foundation has raised \$5 million in pledges and gifts. \$2.1 million of this has been provided to the Centre to support with additional costs, building works, and projects. This has only been made possible by the generous support of donors to the Foundation, those who have left a gift in their wills, and the work done by those on the Foundation Board.

The Foundation is committed to raising \$10 million by 2025

This would help provide financial security to the Centre to give them the freedom to focus on providing their world-class care for children.



The Centre is caring for the children of today, whilst the Foundation is caring for the Centre of tomorrow.

By supporting the Foundation, you are giving Cholmondeley financial security to provide their essential care to children and families across Canterbury, now and into the future.



Cholmondeley Children's Centre Vision

Tamariki are nurtured, strong and resilient. Whānau are self-managing and empowered.



About the Centre

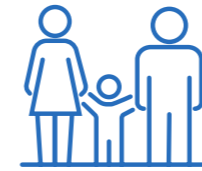
Respite care at the Centre can be accessed in times of family stress, crisis, or as a planned stay, allowing for a focus on wellbeing for everyone.

It also provides support to families in the community through its outreach programme, delivered by the Awhi/care team to strengthen resilience in an ever-changing environment.

It is a unique and essential service to the families of Canterbury and the South Island, as 80% of referrals come from Christchurch, and the remainder from the wider Canterbury region and the South Island. Aside from the difference this service makes in the lives of those who directly access Cholmondeley, it also reduces considerable stress on the wider family unit, other agencies, and the wider community.



The Centre is:



Accessible

We are directly contactable by the community we serve. Anyone can make a referral to Cholmondeley.



Flexible

Our services can be tailored to meet the individual needs of the children and families.



Responsive

In an emergency, Cholmondeley can usually respond within an hour.



Child Centred

Our entire service is focused on the child, with a model of practice and an environment designed around the complete wellbeing of children.



In 2023, Cholmondeley supported over

451 children
FROM
295 families

The Centre's Focus

The child is at the heart of everything – programmes and services are shaped to serve the child and their needs. With professional staff support available 24/7, the positive outcomes of staying at Cholmondeley include:

- Time out from family stresses
- Time to build positive relationships with adults
- Time to play with other children and be a kid
- Time to learn and develop skills
- Time to reduce anxiety, and initiate behavioural change in the child and at home

Cholmondeley acts as a reliable source of care, instilling confidence in caregivers, and strengthening family relationships.

Philosophy of Care

All aspects of Cholmondeley's service are underpinned by a philosophy of care based on the rights of children. We believe in the mana and rich potential of every child and centre our care and education on helping them to develop their own strengths.



Meet Toni Tinaru, General Manager, Cholmondeley Children’s Centre

I have been in the General Manager role at Cholmondeley Children’s Centre since January 2022. I was originally seconded to the Centre as the Clinical Operations Manager and fell in love with the place pretty much within the first three weeks.

I am involved with Cholmondeley because it resonates with my values. I have been working in mental health and Whānau Ora (Family Wellbeing) for a long time. Growing up myself with family harm, and understanding what accessing services has looked like and how it has grown over the years, I’ve come to realise that I’d like to make the difference from the child perspective. It’s often the tamariki that are forgotten, in that their voices are not heard or valued when whānau/families or systems are making decisions. I feel there’s more opportunity, hope and planting of seeds with young people for change and stronger communities.

Being at Cholmondeley gives me the opportunity to make sure we have a Centre and a service that is child voice-led, and child-first, with everything we do focused on advocating for tamariki.

Cholmondeley Children’s Centre is a place of respite, with passionate staff who have sound basic training in education, and knowledge in trauma-informed care. It’s inclusive, diverse, and has offsite and outdoor activities. It provides tamariki with access to experiences that sometimes their whānau/families couldn’t have done, for various reasons. We don’t have crystal balls, so we don’t know if we’re supporting our future Prime Ministers or NATO leaders, and because of this, we must treat every child as if, which they are - carrying special, unique gifts and talents. It’s our role as adults and community to nurture them and give them space to grow healthily. However, it’s much more than just respite. It’s about community.

The need for communities, for whānau, to help their tamariki go somewhere safe, while a family take a breather, will never change. Whether that is due to hardship or poverty, or an upcoming health procedure for a caregiver, the need will always be there. Since 1925, we have been providing that space. Whilst the models of care have looked different over the years, Cholmondeley continues to provide safety.

As the world evolves and turns so do the needs and the trends of communities and whānau, it is important that we maintain what we have now, for the future.

That is where the Foundation comes in: ensuring our children’s future. Communities will benefit from the work of the Foundation, how they are working to support the long-term goals and future of the Centre.

The money will go back into the community, and ultimately, all of Aotearoa, as wherever these tamariki go, they will take the values and integrity they gained from Cholmondeley out into the world. Never underestimate the true value of a dollar given. We know that tamariki are our future leaders, our future teachers, our future doctors, future parents, future counsellors - it’s about investing in the future of our tamariki, and it’s our role as adults to give the tamariki opportunities.

“What inspires me about the Centre and Foundation as a whole, is there is a big group of people who are open to thinking about what’s best for this community, what it needs, and how we can achieve that. I’m very hopeful for the future.”

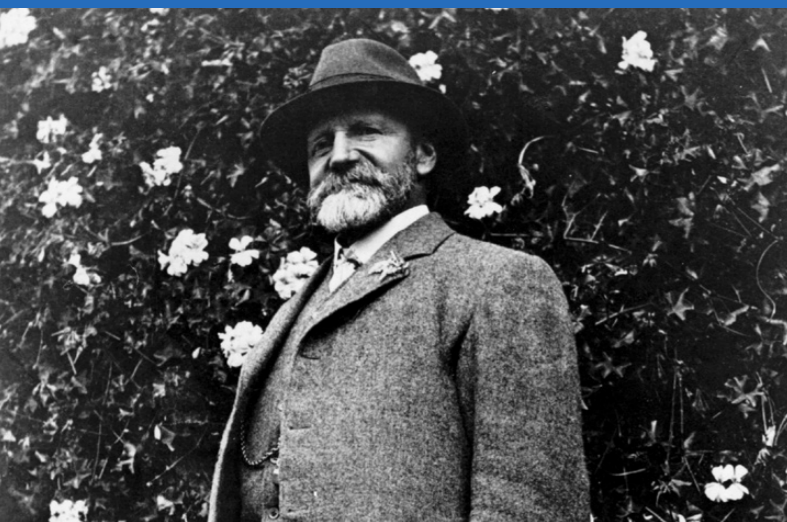


Hugh Heber and the History of Cholmondeley

Heber was a visionary – he saw a need in society, and provided a successful solution, the power of which has carried on for nearly 100 years.

When the original homestead was lost in the February 2011 earthquakes, the rebuild design was done with considered input from the children of Cholmondeley. Wanting Cholmondeley to “never end”, the buildings are laid out in a circular fashion, and the interiors have been crafted for children, to use with ease. The view from the Centre expands out to the eastern horizon, mirroring the work done at the Centre to expand the horizons of the children who come to stay.

During its history, Cholmondeley’s reason for existence has always remained the same: to support children in need. Cholmondeley has developed and adapted to the evolving needs of the community, ensuring it remains relevant to the needs of whom it serves.



1853

Hugh Heber Cholmondeley, known as Heber, arrives in Lyttelton, having emigrated from the Isle of Man with his family

1911

Heber begins the plans for a convalescent children’s home, following the passing of his wife, Margaret, in her memory and to honour her love of children, by donating five acres of land and funds for a purpose-built stone and brick building

1925

Cholmondeley Memorial Children’s Home officially opens on March 7th, following a decade of planning and negotiation, with an inscribed brass plate inside the door dedicating the home to the glory of God and in memory of Margaret.

1993

First expansion of the original homestead is opened in April, to better suit the needs of the children, staff, and accommodate for the demand for Cholmondeley’s services.

2005

Cholmondeley Children’s Foundation is established, to support the essential services the Centre provides.

2011

The Christchurch Earthquakes shake the region, and the original homestead is irreparably damaged. The Centre moves to Living Springs whilst the rebuild is planned and the funds are raised.

2015

The new, purpose-built Centre is opened, following consultations with the neighbours, local architects, and the children themselves, with construction undertaken by Cholmondeley alumni, and the raising of funds to ensure the work was completed on-time and debt-free

2023

The Foundation has distributed \$2.1 million in grants directly to the Centre’s costs

2025

100 Year Anniversary of Cholmondeley Children’s Home Inc.



Be a part of Cholmondeley’s Future

As Cholmondeley nears the celebration of its centenary, the work of the Centre is more in demand than ever. Supporting Cholmondeley Children’s Foundation safeguards the Centre’s services into the future, ensuring a haven for thousands of vulnerable young people in the Canterbury community.

Whilst the Centennial is a cause for celebration, there is much work to be done, and many children and families who still need support. That is where your contribution will make all the difference, which is why we are inviting you to be a part of Cholmondeley’s future.



Cholmondeley has given them a broader outlook of what life is like, and it makes them grateful for what they have. They are just genuinely better people for it.

– Angela, talking about her children spending time at Cholmondeley



A story of hope

How Cholmondeley helped Alex & James

Alex was just five years old when Angela, going through a difficult pregnancy with her second child, found herself in urgent need of support. Angela was a single parent with no family or friends in Christchurch to offer help. She was worried about what would happen if she was suddenly admitted to hospital.

“I was housebound and vomiting all day. It was really bad, and it was affecting Alex. It’s just been me for so long and I think Alex felt quite lonely. So, I went to my doctor and asked if there was any kind of help for him and they suggested Cholmondeley.

To be perfectly honest I had heard that Cholmondeley was for kids who aren’t wanted. But Alex made the decision for me. I said to Alex, ‘You go, but if you want to come home, tell me and I’ll come get you!’ but he said, ‘No Mum, I really love it.’”

After the first visit, the family’s ongoing involvement with Cholmondeley grew naturally; what started as an urgent need became regular planned stays for Alex and his younger brother James. Alex is now 11, and James is five.

Alex has decided he wants to be in the army and volunteer at Cholmondeley and help tamariki in his adult life. He wants to help people. I think it’s because of all the good stuff that has rubbed off on him at Cholmondeley. He’s also become sort of a mentor to people in his class at school. They look up to him as a dad almost. He’s applied to become



Class Counsellor, and that sums it up really. At Cholmondeley he’s looked upon as one of the older boys, they look at him as one of the helpers. He takes that attitude to school, and at home with his brother.

James has learning and behavioural difficulties and isn’t fitting in very well at school. Whereas at Cholmondeley, I think he feels like he fits in. Cholmondeley definitely has a calming effect on him.

Life is a lot better for us now. Just knowing that at the end of the day, if something really bad happened, somebody would be there to help with my boys.

My boys have built up really good relationships with the staff there. To my boys, they’ve kind of become like family. I know that I’ve got support from the staff. I don’t feel like it’s just me anymore.



The Ballantyne Family A Legacy of Support

I first visited what was then known as the Cholmondeley Children’s Home many years ago, with my cousin, the late Campbell Ballantyne. We went to view first-hand how the Centre supported children, and their families, and to decide if the Company should support its endeavours. After our first visit, I remember saying to Campbell, “How good is this! What a wonderful place”.

He replied, “Richard, I know this is a worthy Canterbury charity, doing good work for our community, and one we should support”. That was that, and so it has continued to this day.

The Company, Campbell, and I became more involved with Cholmondeley over the ensuing years, I as a founding member of the Foundation, and Campbell and his wife Leslie as generous supporters. The need for the Centre’s services, as outlined in this Case for Support, means that the organisation is under constant financial strain, despite the efforts of its fundraising staff to raise enough funds each year to sustain the organisation. No easy task!

If the Foundation can build a sizable fund, the income forthcoming will secure the existence of the Centre, and the work of its dedicated staff. The Cholmondeley formula has proven successful over many years, and it’s our duty to see that this continues. Our challenge, and key objective of the Foundation, is to raise the necessary capital.

Today, the Centre and the Foundation are well-governed and managed, and I for one can recommend it as a charity worthy of support.

Richard Ballantyne
Founding Cholmondeley Children’s Foundation Trustee



**Meet our
Foundation
Chairperson
Kerry Dellaca,
MNZM**

What inspired you to support Cholmondeley?

I am indebted to my parents for instilling in me the joy of community work, which was a large part of my growing up in Westport. This, with the desire to help make a difference to the lives of children, drew me to Cholmondeley, where I have been involved since 2005.

Lachie Griffen – the only person I’ve met who’d met Hugh Heber himself – and his 70 plus years of association with and commitment to Cholmondeley has inspired me in my work.

Having retired from the Centre Board, I have dedicated my time to the objectives of the Foundation.

I’m extremely proud of the difference Cholmondeley, and the many wonderful staff, have been able to make to the lives of the children who come to the Centre, and their families.”

What is a special memory from your time with Cholmondeley?

The devastation caused by the Christchurch earthquakes necessitated the decision to demolish the old homestead and build a new facility. The whole process, including consultations with the neighbours, and the children themselves, with construction undertaken by Cholmondeley alumni, the raising of funds to ensure the work was completed on-time and debt-free, is one of the most rewarding projects with which I’ve been involved. Standing in front of nearly 200 members of the Cholmondeley family on the re-opening day is something I will always treasure.



Our Chairman’s Challenge

Cholmondeley needs your support

Cholmondeley has provided respite and emergency care for nearly a century. The demand for these services has never been greater than it is today. Families are facing rising poverty, domestic violence, the impacts of drug abuse, mental and physical health challenges, and they need Cholmondeley’s services now more than ever.

The Foundation’s aim is to provide financial stability and security to the Centre, but to do so, we need help from the community. Reaching the 2025 target of \$10 million through donations, pledges, and gifts in wills is ambitious, but it is a goal my fellow Trustees and I will do everything we can to achieve – and we need your support.

I encourage each of you to consider how you can meaningfully support the Foundation to ensure our children’s future forever.



Ryan's story

Twelve-year-old Ryan has been coming to Cholmondeley for eight years. He has been attending Cholmondeley's quarterly Intermediate Boys' Weekends for the past few years, to spend time with other boys his age.

These weekends are aimed at supporting boys between the ages of ten and thirteen to navigate their early teenage years. The weekends include workshops on managing emotions, staying safe online, and participating in physical activities to push them outside of their comfort zones.

At home, Ryan's mum lives with mental health issues, intensified by the COVID-19 pandemic, which have led to Ryan and his siblings staying at home as their mum's companions, rather than going to school.

After one of Ryan's recent stays, he realised how much he had been missing out on the company of his own peers. A week later, Ryan's mum called the Centre to share how proud she was – Ryan had enrolled himself at his local high school.

Now, Ryan has been attending high school regularly. It's a significant achievement, that prompted Cholmondeley to reach out to a supporter, who supplied Ryan with a laptop to help with his education.

Visiting Cholmondeley, spending time with other boys, and the positive influence of Cholmondeley's staff all influenced Ryan to take it upon himself to make a significant change in his life.

**Ryan's name has been changed to protect his privacy.*

Our Priority Areas

The Foundation takes a long-term approach to how it invests and distributes the funds it raises for the Centre. These funds are focused on priority areas of need. The priority areas are determined by the Centre and support their long-term strategic goals. Donors' generous gifts will go to the areas where they will deliver the greatest impact.



Land & Buildings

When Hugh Heber Cholmondeley had the foresight to set aside land and the original homestead, he gave a gift to the future children of Canterbury, and donations ensure the facilities that make Cholmondeley a haven for whānau/families can be sustained, maintained, and grown.



Equipment & Resourcing

With 451 children staying at the Centre each year, across an age range of 5 to 13 years old, equipment and resources are thoroughly put to the test each day. Donations allow the Foundation to provide the Centre with the items they need for everyday life, making it easier for staff to best look after children in our care.



Learning & Education

Donations are essential to support those working or volunteering at the Centre, ensuring Cholmondeley is leading best practice in the field, and producing research-based evidence to support that. Prioritising the development and growth of staff will only benefit the children who use our facilities. Donating today ensures we can invest in the right people who believe deeply in this work.



Whānau Support

Donations ensure that the Centre can provide support for whānau/family units in a responsive way, that works for them. The work done and support given at the Centre has a positive effect on our children, but the time they spend at Cholmondeley is limited. Having funding to implement Whānau Support means that the Centre's impact can tangibly extend beyond the children's time in care, into the family home the child returns to.



Endowment Fund

Founded in 2005, this Endowment is locked down, to be available in perpetuity, to ensure Cholmondeley is here to stay. It is the safety net to ensure our children's future forever, immune to economic or social upheavals. Donations that are allocated to the Fund as a priority area enable the Foundation to maintain a safe space for generations of Cantabrian children and families to come.



General

While the Centre and the Foundation work closely together to determine which areas of the Centre need the most financial support, the day-to-day realities mean that there will always be needs over and above what has been expected. Donations to this area will support any unforeseen costs, on a case-by-case basis, as requested by the Centre.



Secret Squirrel's Space: A legacy of resilience

In 2013, Cyril Smith left a very generous bequest to assist the work of Cholmondeley Children's Centre. His children have the following words to say about their father's gift:

“Our family is very proud that our father chose to make a significant bequest to Cholmondeley's building programme to support the wonderful essential services Cholmondeley offers families in crisis.”

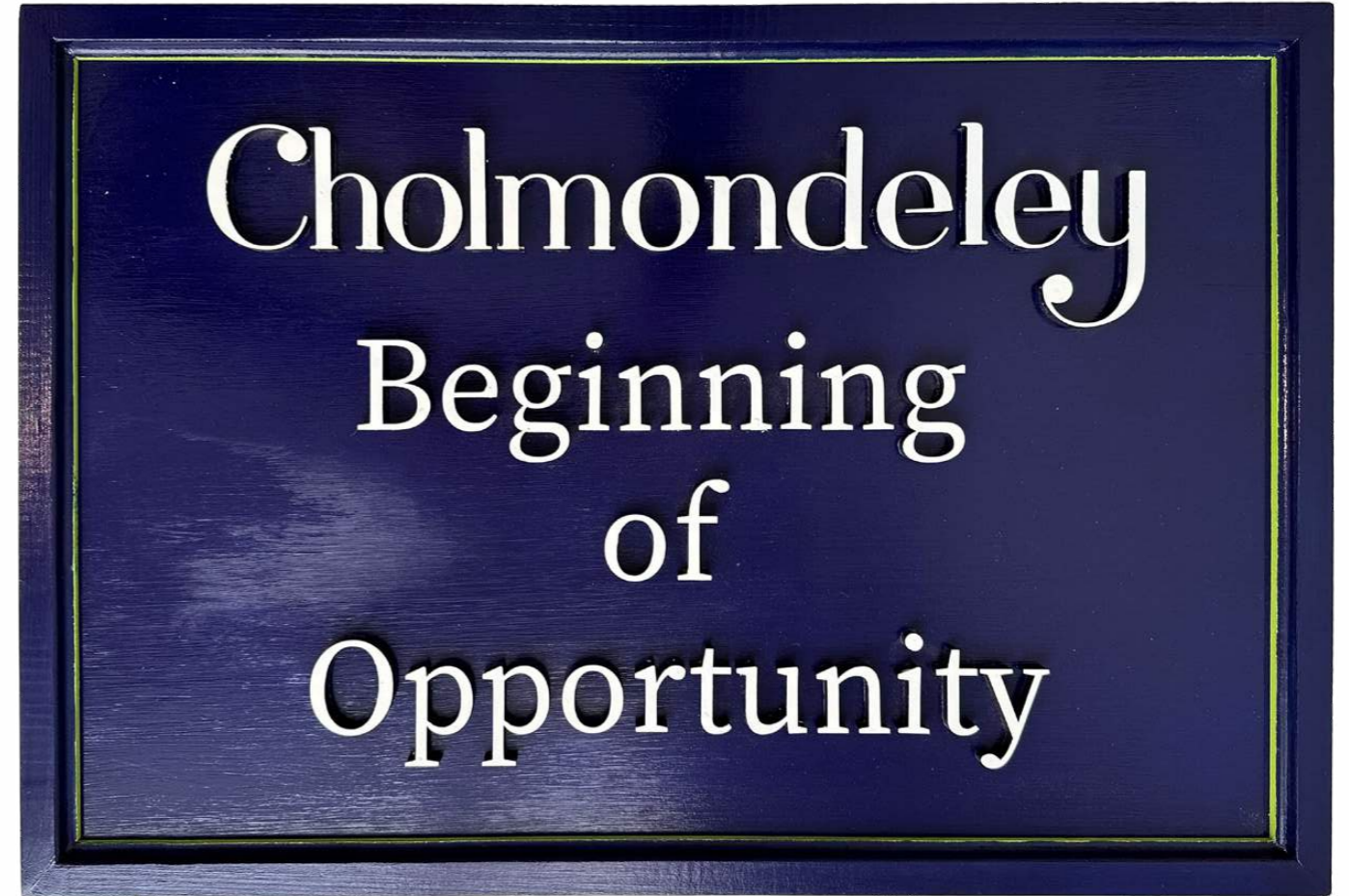
We greatly appreciated Kerry Dellaca and Shane Murdoch (former General Manager) taking time to show us around the new buildings during and after their completion, explain their philosophy and plans, and introduce us to some of the devoted staff and the services they offer. Seeing first-hand what Cholmondeley means to the children who spend time there was inspiring.

This has stimulated us to establish our own giving relationship with Cholmondeley and to take a special interest in its achievements and progress now and into the future.

– Deborah Cox and Erica de Court

The \$3 million dollar bequest left by Cyril Smith not only supported the rebuild of the Centre after the damage caused by the earthquakes, but also contributes to the ongoing work of Cholmondeley. The gift was celebrated with a “secret squirrel space” memorial rock area in the courtyard of the new building, with the inspiring words of the family engraved on the stones.

Secret Squirrel Space...”so that children who need time and space in a peaceful nurturing environment can find it here...”



Giving for positive change

John and Jen Taylor are a retired couple from Christchurch. When John was eight, he attended Cholmondeley Children's Centre. John keenly sees the stresses that young people face today, and to contribute to enabling those young people to be successful, and to broaden their horizons, John and Jen have remembered the Centre with a generous bequest in their wills.

“There are many reasons why we've decided to leave a bequest to Cholmondeley; but in simple terms we feel our contribution will help provide an opportunity for positive change in the lives of children.”

“Making the decision to give has added significant value to our lives, and we would encourage others to do the same”

– John and Jen Taylor



cholmondeley.org.nz/foundation

Our \$10 million goal

The Foundation is seeking individual contributions, pledges, and gifts in wills to reach our financial goal by 2025, the 100th anniversary of Cholmondeley.

This will be a an enduring fund – the income of which can ensure the Centre is equipped to face whatever uncertainties the future may bring, providing stability and longevity. The Foundation offers donors the opportunity to provide a gift that will continue to give the gift of time and space so that kids can just be kids.

Your donation will create a lasting legacy, maintaining the strong foundations that have been built so far, and further the Foundation's commitment to the children and families who rely on, and benefit from, the Centre's services.



40,000 children

and their families have benefitted from this lifeline since 1925.



The Cholmondeley Children's Foundation exists to support and safeguard the vital work that the Centre delivers. The Centre was established from a generous gift of Hugh Heber Cholmondeley, a gift that has created an unparalleled legacy of care for nearly a century.



We ask you to follow the example of Heber and the many generous donors who have supported us since the Foundation was established, and make a gift to the Foundation, to ensure that this legacy of invaluable support to the children and families of Canterbury continues, ensuring our children's future forever.



“[at Cholmondeley] they are really nice, and they will listen to you. The staff are really, really respectful.”

- Former Cholmondeley Child





To discuss the Cholmondeley Children's Foundation in further detail, please don't hesitate to get in touch with us.

Kerry Dellaca

Cholmondeley Children's Foundation Chairperson
P: 021 888 289
E: Kerry.Dellaca@yourgameplan.co.nz

Andrew Fairbairn

Cholmondeley Children's Foundation Trustee
P: 027 224 1340
E: andkelsf@gmail.com

Mark Thompson

Cholmondeley Children's Foundation Trustee
P: 021 379 441
E: thomo441@xtra.co.nz

Sarah Adams

Former Cholmondeley Board Member & Volunteer
P: 027 491 3254
E: Sarah@queenanne.co.nz

Richard Ballantyne

Cholmondeley Children's Foundation Volunteer
E: richard.ballantyne@xtra.co.nz